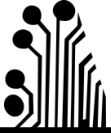
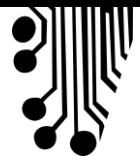


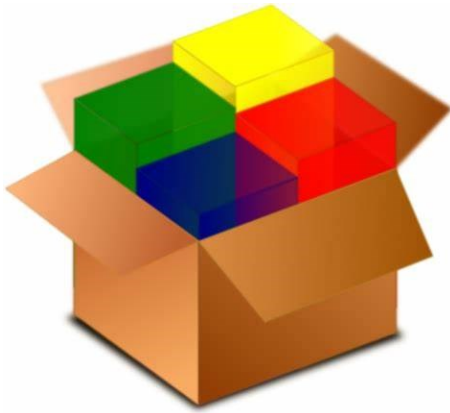
WEB AWARENESS



Use the QR codes to access more information online.

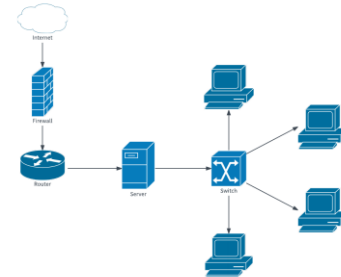
DATA PACKETS

Data Packet - Unit of data made into a single package that travels along a given network path



Can you remember the different sections of a data packet?

NETWORK DIAGRAMS



Look at the Network diagram...
How many Computer can you see?
What symbol is the internet made from?

A network diagram is a visual way to explain how one or more computers are connected together.

You may have come across tablets, computers, laptops in your classroom, can you describe a network at your school?

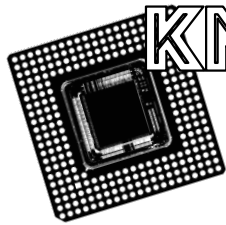
SEARCH ENGINE

A **Search engine works** by looking up the keywords a person has typed into a search box, against a list of stored web pages.

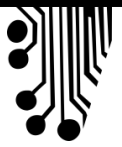
If the keyword is found **KEYWORDS** within the webpage, then the page is listed in your results.

A internet spider will crawl through the internet storing newly updates web pages, to keep the list of webpages up to date for the user, for the next time they search a keyword.





KNOWLEDGE ORGANISER



IT'S ALL ABOUT THE DATA...

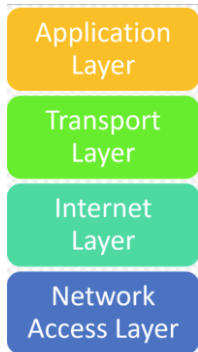
Data packets use a certain protocol to travel through the internet. What is it?

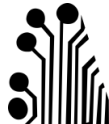
Data is made up of?

TRAVELING LAYERS

The data packets have to travel through several layers of the TCP/IP model before they travel over wifi, fibreoptic or Bluetooth.

Can you find out what each layers does?

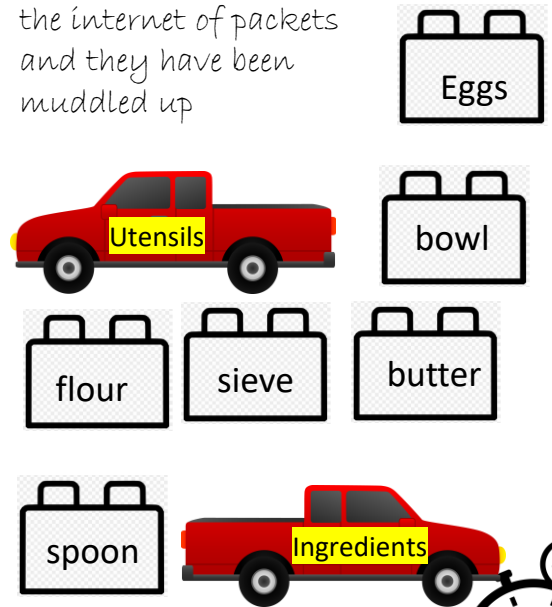




DATA PACKETS

Can you build this data packet together again?

There was a collision on the internet of packets and they have been muddled up



KEYWORDS

- Data Packet
- Network Diagram
- Server
- Router
- IP
- Internet
- Data

