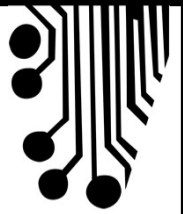


MAIN MEMORY



Main Memory helps run the computer system.

Volatile

Vs.

Non-Volatile

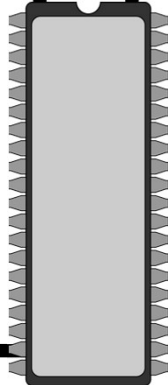
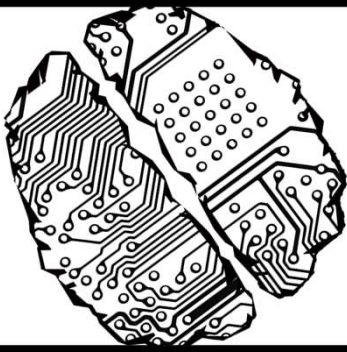
RAM

RAM hold the currently running programs and data

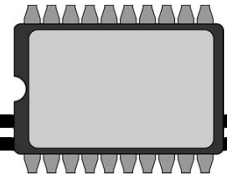
A C E
N C M
D E O
O S R
M S Y

ROM

E N E
A L M
D Y O
R
Y



ROM hold the BIOS & Boot up Program.



CACHE

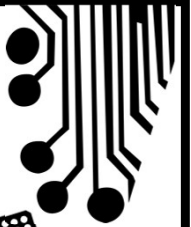
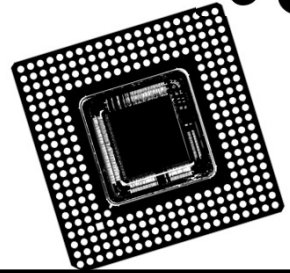
CACHE can be found inside the CPU (L1) and outside the CPU (L2 & 3)



MAIN MEMORY

Less RAM means fewer programs & data can be held.

PERFORMANCE



VIRTUAL MEMORY

When the RAM is full, virtual memory helps keep the system running.



Swapping data is called 'Paging'

RAM & ROM are both built on Flash memory technology

FLASH



TYPES OF FLASH MEMORY

